

2024 SHOW DATES

PAMBULA	13th JANUARY
CANDELO	21st JANUARY
EUROBODALLA	27th - 29th JANUARY
NIMMITABEL	3rd - 4th FEBRUARY
COBARGO	9th - 11th FEBRUARY
BEGA	16th-18th FEBRUARY
DELEGATE	2nd MARCH
DALGETY	3rd MARCH
COOMA	9th MARCH
BEMBOKA	10th MARCH
BOMBALA	16th - 17th MARCH

Ground Space Conditions - Sideshows

Steward - Mr Russell Buckman

1. The committee will arrange positions for the various sideshows, etc.
2. The Society reserves the right to refuse any application for space.
3. Sole rights may be granted to any applicant for space at the discretion of the Committee.
4. NO AMPLIFIERS ALLOWED ON THE GROUNDS.
5. Certificate of safety required on all electrical gear and all Sideshow scaffolding must be passed by the Local Government Authority's Inspector.
6. Sideshows etc must hold their own Public Risk Insurance.
7. Sideshow fees - 50c per square foot.

DELEGATE P & A SOCIETY INC.
115th Annual Show
Saturday 2nd March, 2024

PROGRAM OF RING EVENTS
HORSE ENTRIES taken on the day
RING STEWARDS - M & G Smallman.
RING COMMENTATOR - Mr Phillip Reed
RING SECRETARY - Lauren Dillon
OFFICIALS ONLY ALLOWED IN THE RING

This is NOT AN EA Affiliated Show

The committee reserves the right to alter the program at any time

- Indemnity and Waiver Forms: Competitors taking part in the horse section of the Delegate Show do so at their own risk.
- Each adult competitor MUST sign a waiver form before they compete in ANY event.
- Waiver forms must be completed by a parent or guardian for any competitor under 18 years of age
- PIC: All horses must be entered with PIC number. No PIC no ride.
- District: Events are open to horses and riders residing in the former Bombala Council area and the former North Riding of the former Orbost Shire.
- Local Horse Rules: Horses must be stabled in the area for 30 days. Junior show jump horses to be owned by competitors, parent or guardian thereof.
- Measuring No official measuring will take place at the show, But if a question about height arises, proof of height may be required. In the absence of proof, a decision will be made by the ring master or chief steward and will be final.
- REGISTERED AUSTRALIAN STOCK HORSES: Registration papers must be produced if asked for by the Judge.
- RESERVE CHAMPIONS: When a Champion Ribbon has been awarded, the competitor/exhibit which gained second place to the Champion in the preceding individual class shall then be eligible to come forward to compete for Reserve Champion, together with the other first prize winners.
- A Novice rider or horse is one that has not won a first prize at any show.
- Prize winners are required to take part in the parade of prize winners.
- All horse events are run under peak body rules.

Lochiel Country Retreat



TIME FOR A BREAK

Luxury holiday accommodation, great for family get togethers

Located near Pambula, NSW

Sleeps 10

Hosted by country folk, for country folk

FIND US ON AIRBNB

www.lochielcountryretreat.com

☎ 0119 142 093

✉ lochiel.countryretreat@gmail.com

How the locals like it.



Bombala
123 Maybe st

For super savings & super friendly service
fresh fruit & vegetables, liquor

town delivery,
Ph 64583867

Opening Hours

Mon to Friday 6:00am to 7:30 pm
Saturday & Sunday 7:30 to 5:30 pm

igaliquorbombala@gmail.com

RING 1 – HACK CLASSES START 8.30AM. ENTRY FEE \$5.00

LED HACKS

100 – Led Open Pony 11 h ne 11.2 h

101 - Led Open Pony 11.2 h ne 12 h

102 - Led Open Pony over 12 h ne 13 h

103 - Led Open Pony over 13 h ne 14 h

104 – **Champion and Reserve**

Champion Led Pony

105 – Led Open Galloway over 14h ne 14.2 h

106 – Led Open Galloway over 14.2 h ne 15 h

107 - **Champion and Reserve**

Champion Led Galloway

108 – Led Open Hack over 15 h ne 15.2 h

109 – Led Open Hack over 15.2 h ne 16h

110 – Led Open Hack over 16 h ne 16.2 h

111 – Led Open Hack over 16.2 h

112 - **Champion and Reserve**

Champion Led Hack

LED SHOW HUNTER

113 – Led Show Hunter Pony 11 h ne 11.2 h

114 - Led Show Hunter Pony 11.2 h ne 12 h

115 - Led Show Hunter Pony over 12 h ne 13 h

116 - Led Show Hunter Pony over 13 h ne 14 h

117 – **Champion and Reserve Champion**

Led Show Hunter Pony

118 – Led Show Hunter Galloway
over 14h ne 14.2 h

119 – Led Show Hunter Galloway
over 14.2 h ne 15 h

120 - **Champion and Reserve Champion**

Led Show Hunter Galloway

121 – Led Show Hunter Hack over 15 h ne 15.2 h

122 – Led Show Hunter Hack over 15.2 h ne 16h

123 – Led Show Hunter Hack over 16 h ne 16.2 h

124 – Led Show Hunter Hack over 16.2 h

125 - **Champion and Reserve Champion**

Led Show Hunter Hack

126 - **SUPREME LED HORSE OF SHOW
FROM WINNERS OF CLASSES**

104, 107, 112, 117, 120, 125

DISTRICT CLASSES

127 – District Pony Hack/Hunter ne 14 hands

128 – District Galloway Hack/Hunter
over 14 h ne 15 h

129 – District Hack/Hunter over 15 h

130 – **Champion and**

Reserve Champion District Hack

Sashes Donated by Margaret Summerill.

RIDDEN HACKS

131 – Ridden Pony Hack 11 h ne 11.2 h

132 - Ridden Pony Hack 11.2 h ne 12 h

133 - Ridden Pony Hack over 12 h ne 12.2 h

134 - Ridden Pony Hack over 12.2 h ne 13 h

135 - Ridden Pony Hack over 13 h ne 13.2 h

136 - Ridden Pony Hack 13.2 h ne 14 h

137 – Ridden Child's Pony Hack ne 14 h

138 – Ridden Adult's Pony Hack ne 14 h

139 - **Champion and**

Reserve Champion Ridden Pony Hack

140 – Ridden Open

Galloway Hack over 14h ne 14.2 h

141 – Ridden Open

Galloway Hack over 14.2 h ne 15 h

142 – Child's Ridden Open

Galloway Hack over 14 h ne 15 h

143 – Adult's Ridden Open

Galloway Hack over 14 h ne 15 h

144 - **Champion and Reserve Champion**

Ridden Open Galloway Hack

145 – Ridden Open Hack over 15 h ne 15.2 h

146 – Ridden Open Hack over 15.2 h ne 16h

147 – Ridden Open Hack over 16 h ne 16.2 h

148 – Ridden Open Hack over 16.2 h

149 – Child's Ridden Open Hack over 15 h

150 – Adult's Ridden Open Hack over 15 h

151 - **Champion and Reserve Champion
Ridden Open Hack**

RIDDEN SHOW HUNTER

- 152 – Ridden Show Hunter Pony 11 h ne 11.2 h
153 - Ridden Show Hunter Pony 11.2 h ne 12 h
154 - Ridden Show Hunter Pony
over 12 h ne 12.2 h
155 - Ridden Show Hunter Pony
over 12.2 h ne 13 h
156 - Ridden Show Hunter Pony
over 13 h ne 13.2 h
157 - Ridden Show Hunter Pony 13.2 h ne 14 h
158 – Ridden Child's Pony Hack ne 14 h
159 – Ridden Adults's Pony Hack ne 14 h
160 – AHHA Members Show Hunter Pony
**161 - Champion and Reserve Champion
Ridden Show Hunter Pony**
162 – Ridden Show Hunter Galloway
over 14h ne 14.2 h
163 – Ridden Show Hunter Galloway
over 14.2 h ne 15 h
164 – Child's Ridden Show Hunter Galloway
over 14 h ne 15 h
165 – Adult's Ridden Show Hunter Galloway
over 14 h ne 15 h
166 – AHHA Members Show Hunter Galloway
**167 - Champion and Reserve Champion
Ridden Show Hunter Galloway**
168 – Ridden Show Hunter Hack
over 15 h ne 15.2 h
169 – Ridden Show Hunter Hack
over 15.2 h ne 16h
170 – Ridden Show Hunter Hack
over 16 h ne 16.2 h
171 – Ridden Show Hunter Hack over 16.2 h
172 – Child's Ridden Show Hunter Hack
over 15 h
173 – Adult's Ridden Show Hunter Hack
over 15 h
174 – AHHA Members Show Hunter Hack
**175 - Champion and Reserve
Champion Ridden Show Hunter Hack**

176 - SUPREME RIDDEN HACK/HUNTER OF THE SHOW (Winners of classes 130, 139, 144, 151, 161, 167, 175 & 229)

NB: Horses competing in Classes 131 to 151 are not eligible to compete in classes 152 to 175. Horses competing in Classes 152 to 175 are not eligible to compete in classes 131 to 151. The winner of Class 228 Champion Ridden ASH is eligible to compete in Class 176.

Prize Money:

Classes

100 – 103, 105, 106, 108 – 111, 113 – 116,
118, 119, 121 – 124 1st \$5.00, 2nd \$2.00

Classes

104, 107, 112, 117, 120 & 125 –
Champion \$10.00, Reserve \$5.00
Class 126 Supreme Led Horse of Show - \$20.00

Classes 127 – 129, 1st \$6.00, 2nd \$3.00

Classes 131 – 138, 140 – 143, 145 – 149,
152 – 159, 162 – 165, 168 – 173 –
1st \$7.00, 2nd \$4.00, 3rd \$2.00

Class 130 – Champion \$10.00, Reserve \$5.00

Classes 139, 144, 151, 161, 167, 175
- Champion \$10.00, Reserve \$5.00

Classes 160, 166 & 174

AHHA Members – Ribbon Only

Class 176 – Supreme Champion Hack of Show
\$50.00, Garland for Supreme Champion Hack
of Show donated by

Mr Max and Mrs Gail Smallman

RING 2 (Riding Classes)

Start 8:30am

(Entry Fee \$5.00)

Class

- 201 - Handler under 12 years.
- 202 - Handler 12 & under 17 years.
- 203 - Child under 6yrs led.
- 204 - Child rider under 6 years
- 205 - Child rider 6 & under 9 years.
- 206 - Child rider 9 & under 12 years.
- 207 - Champion/Reserve Champion
Child Rider under 12 years.**
- 208 - Child rider 12 years & under 15 years
- 209 - Child rider 15 years & under 17years.
- 210 - Champion/Reserve Champion
Child Rider 12 years & under 17 years.**
- 211 - Novice Lady rider.
- 212 - Lady Rider 17 years and under 40 years.
- 213 - Lady Rider 40 years & over.
- 214 - Champion/Reserve Champion Lady
Rider.**
- 215 - Gentleman Rider 17 years
& under 40 years.
- 216 - Gentleman Rider 40 years & over.
- 217 - Champion/Reserve Champion
Gentleman Rider.**

PRIZE MONEY

Class 203: 1st \$5.00, 2nd \$2.00.

Classes 201, 202, 204, 205, 206, 208, 209,
211 : 1st \$7.00, 2nd \$4.00

Classes 207, 210, - champion \$10.00
reserve \$5.00

Classes 212, 213, 215, 216.

1st \$10.00, 2nd \$5.00

Class 214 & 217: Champion \$20.00,
Reserve \$10.00



RING 2 - To commence when Riding Classes are finished

(Australian Stock Horse Classes Reg. Only)
(Owner to be financial member of ASHA)

Led Classes (Entry Fee \$5.00)

- 218 - Led Mare.
 - 219 - Led Gelding.
 - 220 - Led Colt or Stallion.
 - 221 - CHAMPION/RESERVE CHAMPION
LED ASH.**
- Prize money: 1st \$5.00,
2nd \$2.00, 3rd \$1.00,
Champion \$7.00, Reserve \$3.00**

Ridden/Hack Classes (Entry Fee \$5.00)

- 222 - Novice Ridden Snaffle Bit.
- 223 - Ridden 15h & under Snaffle Bit.
- 224 - Ridden over 15h Snaffle Bit.
- 225 - Junior ridden stockhorse under 17 yrs
- 226 - Hack 15h & under.
- 227 - Hack over 15h.
- 228 - CHAMPION/RESERVE CHAMPION
RIDDEN A.S.H.**

**Prize money: 1st \$10.00, 2nd \$6.00,
3rd \$4.00,
Champion \$15.00,
Reserve/Champion \$5.00**

Working Classes: Entry Fee \$5.00

- 229 - Novice working Mare or Gelding
- 230 - Working Mare.
- 231 - Working Gelding.
- 232 - Working Stallion.
- 233 - Junior working Stock horse under 17yrs.
- 234- CHAMPION/RESERVE CHAMPION
WORKING ASH.

**Prize Money: 1st \$10.00, Second \$6.00,
3rd \$4.00.**

**Champion: \$20.00,
Reserve: \$5.00**

Donated by Bibbenluke Stock Horse Stud.

****Winner of class 228 eligible to compete in
class 176 SUPREME CHAMPION HACK
OF THE SHOW.**

– Home of National & Royal Champions –

BIBBENLUKE

Australian Stock Horse Stud

"GET THE WINNING EDGE"



Quality Mares & Geldings Available for Sale

Enquiries: **Bill or Julie Peadon, Bibbenluke NSW**
(02) 6458 5232 (AH) or Mobile: 0448 545 840 or 0427 585 232

Email: **juliepeadon3@gmail.com**

Photo Courtesy: Narelle Wockner Photography

Ring 3 - (Show Jump Ring) Start 8:00am

Class

- 301 - Cross rails
Entry Fee: \$5.00
Prize: ribbon and a small prize
- 302 - 45cm A2
Entry Fee: \$5.00
Prize Money:
1st \$20.00, 2nd \$15.00, 3rd \$10.00, 4th \$5.00
- 303 - 60cm A2
Entry Fee: \$5.00
Prize Money:
1st \$20.00, 2nd \$15.00, 3rd \$10.00, 4th \$5.00
- 304 - 70cm Am7
Entry Fee: \$5.00
Prize Money:
1st \$20.00, 2nd \$15.00, 3rd \$10.00, 4th \$5.00
- 305 - 90cm Am7
Entry Fee \$5.00
Prize Money: 1st \$50.00, 2nd \$30.00, 3rd \$10.00, 4th \$5.00.
- 306 - Open 1m Am5
Entry Fee \$10.00
Prize Money: 1st \$80.00, 2nd \$60.00, 3rd \$40.00, 4th \$20.00.
- 307 - Open 1.10m Am5
Entry Fee \$10.00
Prize Money: 1st \$100.00, 2nd \$80.00, 3rd \$60.00, 4th \$40.00.
- 308 - Open 1.15m Am5
Entry Fee \$10.00
Prize Money: 1st \$100.00, 2nd \$80.00, 3rd \$60.00, 4th \$40.00

309 - Whit Ingram Memorial

Open 1.25m Am5

Entry Fee \$40.00

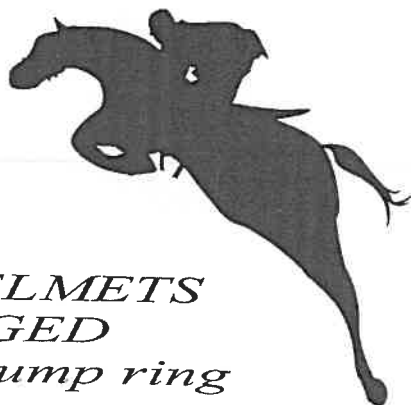
Prize Money: 1st \$400.00, 2nd \$100.00, 3rd \$80.00, 4th \$50.00

The Wit Ingram Memorial Perpetual Trophy & \$400.00 donated by the family of the late Wit Ingram - Denise, Kelvin, David, Joanne and Lucille, will be awarded to the winner of Class 309. Ribbons for this class donated by Mrs Joanne Jamieson.

Point scores in Classes 307, 308 & 309 count for Nimmity Bell. Point Score is over 4 Shows - Nimmitabel, Delegate, Dalgety and Bombala. Competitors must compete at all of the 4 Shows. Riders in this event must wear coats and nominate which class (ie. 307, 308 or 309) they wish to compete in.

1st Prize Nimmity Bell and \$450.00.
2nd Prize \$240.00, 3rd Prize \$160.00,
4th Prize \$115.00, 5th Prize \$60.00.

For more details of the Nimmity Bell Show Jumping see page 21, sponsored by Participating Shows Societies



**PLEASE NOTE HELMETS
MUST BE TAGGED
to compete in show jump ring**

THE NIMMITY BELL SHOWJUMPING POINTSCORE

Established in 1981

SPONSORED BY ALPINE MOTOR GROUP COOMA, SNOWY LEGAL AND PARTICIPATING SHOW SOCIETIES

Please Note: 2023 revised rules made by show committees

Prizes: Rug + 1st \$450; 2nd \$240; 3rd \$160; 4th \$115; 5th \$60

The "Nimmity Bell" show jumping pointscore is a competition run over 4 shows
– Nimmitabel, Delegate, Dalgety and Bombala.

The "Nimmity Bell" trophy is to be awarded to the horse & rider combination
with the highest pointscore in open competition over 4 shows.

This will be awarded at the completion of events at the Bombala Showjumping events.

1. Horses can only score in **80cm** or higher, novelty events excluded,

All entrants in these events will be eligible for the

"Nimmity Bell Pointscore" regardless of the total amount of entries in one class.

2. A horse & rider combination can only score once at each show.

This score will be their best placing from that show. If a horse fails to place in an event,
it will score zero for that show.

The points will be awarded as follows:

1st = 5 points, 2nd = 4 points, 3rd = 3 points, 4th = 2 points, 5th = 1 point,

no placing yet eligible = 0 points.

In the case of "tied" placings the points will be split, the same way as prize money.

3. **Horses and rider combination must compete at all 4 shows** to

be eligible for the "Nimmity Bell Pointscore". The only exception will be

if an official vet / doctor's certificate is presented to the official scorer indicating
the horse/ rider's inability to compete at one of the 4 shows. .

4. Any disputes regarding the "Nimmity Bell Pointscore" must be directed to
Anita Walder 0428613344 to be dealt with. Official protest/s must be made in writing
within 1 hour of the class being completed and must be accompanied by \$50.00
and presented to the chief steward of the relevant show.

5. **Please note: It is requested that EA summer dress standards apply for competitors
at all four shows** (no polo shirts – shirt with tie or stock to be worn).

6. **Overall prize money will be awarded to the top 5 place getters at the
completion of events at Bombala Show.**

Ring 4 - Sporting Events -

To commence when show jumping is finished

Sponsored by
Talbot Transport
Delegate Café
Delegate General Store

Winners to be taken on time.

Entry Fee: \$5.00 Classes 1 to 20
Prize Money: 1st \$5.00, 2nd \$2.00, 3rd \$1.00

Under 7yrs

- 1 - Bending
- 2 - Bounce Pony
- 3 - Barrel
- 4 - Western Pole Bending
- 5 - Hurry Scurry

7yrs and under 9yrs

- 6 - Bending
- 7 - Bounce Pony
- 8 - Barrel
- 9 - Western Pole Bending
- 10 - Hurry Scurry

9yrs and under 13yrs

- 11 - Bending
- 12 - Bounce Pony
- 13 - Barrel
- 14 - Western Pole Bending
- 15 - Hurry Scurry

The Ken Summerill Memorial Sash will be awarded to the junior rider under 13yrs with the highest point score taken from the three Junior Events, ie Junior Bending Race, Bounce Pony and Junior Barrel Race. Points will be awarded as follows: 1st 3points, 2nd 2 points and 3rd 1 point.
Sash donated by Mr. P. Jeffreys.

13yrs and under 17yrs

- 16 - Bending
- 17 - Bounce Pony
- 18 - Barrel
- 19 - Western Pole Bending
- 20 - Hurry Scurry

Open Sporting

- 21 - Bending
- 22 - Bounce Pony
- 23 - Western Pole Bending
- 24 - Hurry Scurry

Entry Fee - Classes 21- 24, \$5.00
Prize Money: 1st \$20.00, 2nd \$10.00,
3rd \$5.00

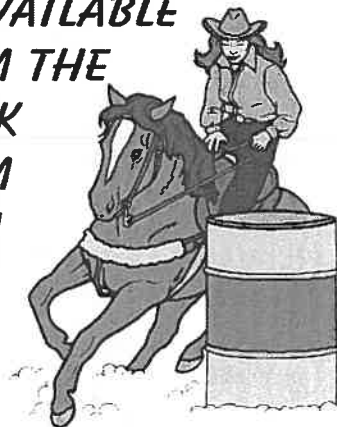
25 - Barrel

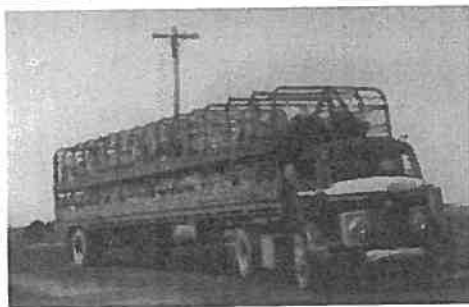
Entry Fee - Class 25 - \$10.00
Prize Money: 1st \$50.00, 2nd \$30.00
3rd \$10.00

List of Sponsors for Ring Events.

Canturf P/L
Mr P. Jeffreys
Miss M. Summerill
The Late Mr Wit Ingram's Family
Ms Joanne Jamieson
Calvary Pastoral Company
Stewart's Garage

**BREAKFAST WILL
BE AVAILABLE
FROM THE
KIOSK
FROM
9:AM**





NORMAN TALBOT



***LIVESTOCK
&
GENERAL***

**Tel (02) 6458 8085
Mobile 0418 516 076**

Email: talbottransport@bigpond.com

Delegate P & A Society

TEAM SORTING

1 DAY EVENT!

50% PAYBACK!

JACKPOT SATURDAY ARVO!

Come and join us at the Delegate Show
for our newest event to enter our schedule

Entries open on the 20th February 2024 at 7pm!

Entries - \$65 per rider, 4 riders per team

Wavers **MUST** be signed to enter tthis event

Entry enquires to

Lance Matthews - 0458 517 872

Kaylee Ingram - 0423 048 255