

Bendoc Park Poll Herefords

Easy Care Cattle

High muscle, milk, fat and fertility.
Breeding easy care bulls to reach high MSA indexes.

This year's catalogue includes genetics from some of the leading cattle studs including
Yavenvale, Tobruk, Quamby Plains, Wirruna and Mawarra.

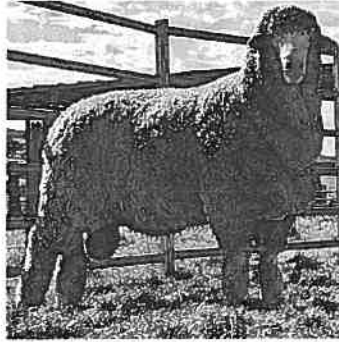
Bulls are grass fed and performance recorded on
BREEDPLAN and will be available at our sale later in the year.



Annual Sale - August 2024
For further information tel.

Eddie Sellers 0417370929 Lucy Sellers 0408193162.

WEST PLAINS POLL MERINOS



West Plains Zodiac ET

Semen Available

**Has been used in Embryo
Transfer and AI programs
across Australia**

**Flock Rams
available privately**



**Drew and Laura Chapman
306 Rocky Range Road, Delegate NSW 2633**

0428 823 533

hinesvillewestplains.com



SECTION B - SHEEP

All stud sheep must be from brucellosis free flocks.

Steward: Mr Angus Hobson.

First prize Award Ribbon; 2nd Award Ribbon, except where otherwise specified.

NB. All exhibitors must complete Johnne's Disease Declaration

And NVD WAYBILL * Entry Fee: \$1.00

One sheep one entry.

unless otherwise specified.

Any First Prize winner, 2-tooth or over,

May compete for Championships.

Exhibits to be on the ground by 9:00am.

Judging will commence at 9:30am and

Exhibits will not be accepted after that Time.

Sheep in both sections are eligible for Champions and Grand Champions.

Exhibitors are required to arrange holders For their sheep for judging.

All Stud Merino sheep entered in open Section must be shorn in accordance with

NSW Sheepbreeder's Association rules

And bear association ear labels.

MERINO

Open Classes (Stud Sheep)

Super Fine Wool Classes (Rams)

Class

1 - Ram March Shorn 2 tooth & under

2 - Ram March Shorn 4 tooth & over

3 - Ram August Shorn 2 tooth & under

4 - Ram August Shorn 4 tooth & over

5 - **Champion Super Fine Wool Ram**

Super Fine Wool Classes (Ewes)

6 - Ewe March Shorn 2 tooth & under

7 - Ewe March Shorn 4 tooth & over

8 - Ewe August Shorn 2 tooth & under

9 - Ewe August Shorn 4 tooth & over

10 - **Champion Super Fine Wool Ewe**

Fine Wool Classes (Rams)

11 - Ram March Shorn 2 tooth & under

12 - Ram March Shorn 4 tooth & over

13 - Ram August Shorn 2 tooth & under

14 - Ram August Shorn 4 tooth & over

15 - **Champion Fine Wool (Ram)**

Fine Wool Classes (Ewes)

16 - Ewe March Shorn 2 tooth & under

17 - Ewe March Shorn 4 tooth & over

18 - Ewe August Shorn 2 tooth & under

19 - Ewe August Shorn 4 tooth & over

20 - **Champion Fine Wool Ewe**

Fine Medium Wool Classes (Rams)

21 - Ram March shorn any age

22 - Ram August shorn any age

23 - **Champion Fine Medium Wool Ram**

Fine Medium Wool Classes (Ewes)

24 - Ewe March Shorn (Any Age)

25 - Ewe August Shorn (Any Age)

26 - **Champion Fine Medium Wool Ewe**

Medium Wool Classes (Rams)

27 - Ram March Shorn 2 tooth and under

28 - Ram March Shorn 4 tooth & over

29 - Ram August Shorn 2 tooth & over

30 - Ram August Shorn 4 tooth & over

31 - **Champion Medium Wool Ram**

Medium Wool Classes Ewes

32 - Ewe March Shorn 2 tooth & under

33 - Ewe March Shorn 4 tooth & over

34 - Ewe August Shorn 2 tooth & under

35 - Ewe August Shorn 4 tooth & over

36 - **Champion Medium Wool Ewe**

Strong Wool Classes (Rams)

37 - Ram March Shorn (Any Age)

38 - Ram August Shorn (Any Age)

39 - **Champion Strong Wool Ram**

Strong Wool Classes (Ewes)

40 - Ewe March Shorn (Any Age)

41 - Ewe August Shorn (Any Age)

42 - **Champion Strong Wool Ewe**

Delegate General Store

A Friendly Grocer Store.

**We are happy to Source goods
not currently in stock if you ask.**

48 Bombala Street
Delegate
Phone 6458 8142

Merino Sheep Junior Judging Competition

(Under 25 years of age)

1:00pm Sheep Pavilion

Sponsored by  *Monaro Wool Services*

Enquiries: Shaun Walcott
ph 0427 560 410

1st prize \$50

2nd prize \$35

3rd prize \$15

SECTION B - SHEEP

Poll Merino Classes Rams

- 43 - Poll Ram March Shorn - Superfine/Fine (Any Age)
- 44 - Poll Ram March Shorn - Medium/Strong (Any Age)
- 45 - Poll Ram August Shorn - Superfine/Fine (Any Age)
- 46 - Poll Ram August Shorn - Medium/Strong (Any Age)
- 47 - **Champion Poll Merino Ram**

Poll Merino Classes (Ewes)

- 48 - Ewe March Shorn - Superfine/Fine (Any Age)
- 49 - Ewe March Shorn - Medium/Strong (Any Age)
- 50 - Ewe August Shorn - Superfine/Fine (Any Age)
- 51 - Ewe August Shorn - Medium/Strong (Any Age)
- 52 - **Champion Poll Merino Ewe**

Unhoused Merino/Poll Merino Section

- 53 - Unhoused Ram - Superfine/Fine (Less than 12 months growth)
- 54 - Unhoused Ram - Medium/Strong (Less than 12 months growth)
- 55 - **Champion Unhoused Ram**
- 56 - Unhoused Ewe - Superfine/Fine (Less than 12 months growth)
- 57 - Ewe Medium/Strong - (Less than 12 months growth)
- 58 - **Champion Unhoused Ewe**
- 59 - **Grand Champion Ram & Reserve Grand Champion Ram** to be bred by the exhibitor and Selected from all sectional Championship Winners. The "The Bibbendale" Perpetual Trophy donated by the late George Constance will be awarded to the Grand Champion Ram of the Show plus ribbon and prize of \$100 donated by the George Constance bequest.

- 60 - **Grand Champion Ewe & Reserve Grand Champion Ewe** selected from all sectional Championship winners and to be bred by exhibitor. The "C. R. Martin Memorial" Perpetual Trophy donated by Anne & the late Malcom Martin will be awarded to the Grand Champion Ewe of the Show plus ribbon and prize Donated by Virbac.

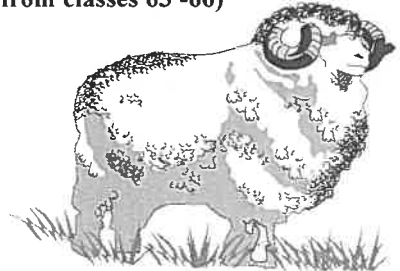
- 61 - **Supreme Merino Exhibit** - Selected from Grand Champion Ram and Ewe \$100.00 award sponsored by Hinesville Merino Stud.

- 62 - **The R F Ingram Perpetual Trophy** for the **Group of 1 Ram & 2 ewes** bred by the exhibitor. The exhibitors name will be inscribed on the trophy for the year in which it is won. Special prize of \$250.00 donated by Robert, Pam, Lachlan & Braden Ingram of Tombong.

Commercial Classes

Open to merino Breeders not breeding rams.

- 63 - Ewe Lambs Superfine/Fine - Pen of Three
- 64 - Ewe Lambs Medium/Strong - Pen of Three
- 65 - 2 Tooth Ewes Superfine/ - Pen of Three
- 66 - 2 Tooth Ewes Medium/Strong - Pen of Three
- 67 - **Champion Commercial Ewe (selected from classes 63 -66)**



SECTION B - SHEEP

British & Australian Breeds

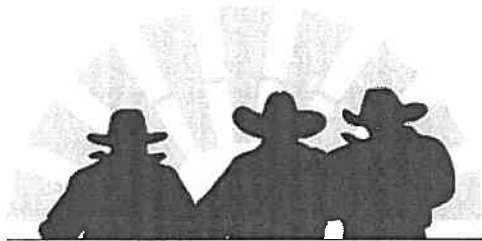
Limit of two entries to each class. All sheep to be bred by exhibitor. Only registered breeds are eligible to compete in this section.

- 68 - Border Leicester Ram Lamb
- 69 - Border Leicester Ram 1 year and over
- 70 - Border Leicester Ewe Lamb
- 71 - Border Leicester Ewe 1 year and over
- 72 - Champion and Reserve Champion Border Leicester Ram & Ewe. Ribbons.
- 73 - Poll Dorset Ram Lamb
- 74 - Poll Dorset Ram 1 year and over
- 75 - Poll Dorset Ewe Lamb
- 76 - Poll Dorset Ewe 1 year and over. Champion and Reserve Champion Poll Dorset Ram and Ewe Ribbons.
- 77 - White Suffolk Ram Lamb
- 78 - White Suffolk Ram 1 year and over.
- 79 - White Suffolk Ewe Lamb.
- 80 - White Suffolk Ewe 1 year and over. Champion and Reserve Champion White Suffolk Ram and Ewe Ribbons.

- 81 - Texel Ram Lamb.
 - 82 - Texel Ram 1 year and over.
 - 83 - Texel Ewe Lamb
 - 84 - Texel Ewe 1 year and over.
 - 85 - Champion and Reserve Champion Texel Ram & Ewe Ribbons. Trophy will be awarded to the champion British Breeds Exhibit. Trophy will be won outright.
- N. A. McDonald Memorial Perpetual Trophy** donated by the McDonald Family will be awarded to the most successful exhibitor in section B plus Trophy donated by Gallagher.

PRIME LAMBS

- 86 - Pen of 3 Crossbred Lambs Shorn.
- 87 - Pen of 3 Crossbred Lambs Unshorn. Lambs suitable for the commercial market.



RLA

riverina livestock agents

the boys in the know

Lewis RLA Livestock and
Property Pty Ltd
Contact Justin Lewis
0400 309448



DYNON WOOLS

EVER WANTED TO SELL DIRECT TO EXPORT?

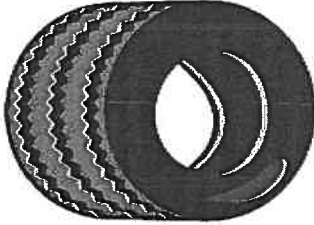


Chat to the Dynon Export Team & find out how easy it is
Harry: 0411 599 409 or Stoj: 0400 029 679

BOMBALA TYRES

178 MAYBE STREET
BOMBALA NSW 2632

02 64583642



Auto Parts
&
Products
Available

Mobile Service also available

0447 583 290

RT/CT Centre Delegate

66a Bombala St Delegate
Delegate Progress Association

Phone 6458 8388 Email dpaoffice@bigpond.com
Opening Hours Mon, Wed, Fri, Sat 10am to 3pm
Or by appointment.

Accommodation Bookings for
Nurses Cottage, Gallery Flat, One bedroom cabin and 2 bedroom cabin
through bookings.com

Borderline and Bundian Way Galleries - Gifts and cards for all occasions

RTA E-Tags For Hire - Centrelink and Medicare Access
Internet Access - free for Seniors

Photocopying, email and Laminating
Photo Printing 4x6 up to A3+ on Photo paper.
Library



Maybe Decor

GIFTS, HOMEWARES, SOFTS FURNISHINGS
LADIES FASHION

MAYBEDECOR.BOMBALA@GMAIL.COM

FIND US ON FACEBOOK & INSTAGRAM

Opening hours

<i>Monday</i>	<i>Closed</i>
<i>Tuesday</i>	<i>10am to 5pm</i>
<i>Wednesday</i>	<i>10am to 5pm</i>
<i>Thursday</i>	<i>10am to 5pm</i>
<i>Friday</i>	<i>10am to 5pm</i>
<i>Saturday</i>	<i>10am to 2pm</i>

Australian Wool & Pastoral Agency Ltd:
T/AS Monaro Wool Services & Schute Bell Badgery Lumby



Monaro Wool Services

**WOOL MARKETING
NOT JUST WOOL SELLING**

- Personal Service
 - Farm Pick-up
 - Prompt Payment
- Wool Marketing Assistance
 - Wool Packs

Call in and see Ben, Natalee, Brett, Peter, David & Josh
54-56 Polo Flat Road, Cooma NSW 2630
P: 6452 4494 F: 6452 4464

Other wool stores at:

Queanbeyan - 0427 910 151

Bombala - David Platts Phone: 6458 3720
Fridays 9am - 5pm

Bega - David Platts Mobile: 0428 586 687
"Kingswood"
Princes Highway
BEGA NSW 2550



SECTION C - WOOL

Stewards: Mr. Ron Horton.

Exhibits may be lodged with Stewards between 6:00 and 8:00 pm at the Pavilion on Friday, 3rd of March. Judging at 9:30am Saturday, 4th of March.

Fleeces, except where otherwise specified, To be judged in accordance with the University of Wool Technology points Class system and to be of not more than Twelve months growth. Rams' wool not Eligible except where otherwise specified. All Skirted fleeces to weigh not less than 2.5kg. All fleeces to be grown by exhibitor, unhused, except where otherwise specified.

Limit of 2 entries for each class.

Class

- 1 - Merino Fleece, strong combing, skirted.
- 2 - Merino Hogget Fleece, strong Combing, skirted.
- 3 - Merino Fleece, medium combing, skirted.
- 4 - Merino Hogget Fleece, medium Combing, skirted.
- 5 - Merino Fleece, fine combing, skirted.
- 6 - Merino Hogget Fleece, fine combing, skirted.
- 7 - Merino Fleece, superfine.
- 8 - Merino Hogget Fleece, super fine combing skirted.
- 9 - Merino Fleece, any type, unskirted, to be judged for commercial value.
- 10 - Strong Combing Skirted Ram Fleece.
- 11 - Medium Combing Skirted Ram Fleece.

- 12 - Fine Combing Skirted Ram Fleece.
- 13 - Best Fleece of Ram's Wool, Unskirted, open to bought sheep.
- 14 - Best Fleece of Ewe's Wool, unskirted, open to bought sheep.
- 15 - Best Fleece of Hogget Wool, any type, unskirted.
- 16 - Champion Fleece of Show, skirted fleece only, eligible. No special entry required.
Trophy donated by Mr. Barry and the late Mrs Alma Reed's family.
Sash for Reserve.
- 17 - Best Border Leicester/Merino Cross Ewe Fleece, skirted.

Special Prizes:

L.G.P.A. Memorial Trophy of E.G. Ingram & \$100 donated by

Warren and Frances Kimber Pty Ltd to most successful Exhibitor in section "C".

\$200 awarded to skirted Fleece of Highest Commercial Value.

Donated by **Dynon Wools**

THOMAS W. GREEN FLEECE COMPETITION

A Perpetual Trophy donated by Thomas W. Green & Company Pty. Ltd. Will be awarded to the winner. Trophy to be held by the winner for one year and returned to the P & A Society.

Open to unrugged, skirted Merino Ewe and/or Wether wools, of not more than 12 months grown.

Sheep are not to be housed and are to be paddock reared.

Each entry is to comprise THREE FLEECES as a unit.



133 Maybe Street, Bombala

02 64 583 510

Famous for our friendly quality service and Country Meals, Breakfasts, Burgers, Schnitzels and Steaks'. Great Italian Coffee our specialty – with Cakes made fresh on the premises and specialty Cakes to Order. Fresh are our Sandwiches, Wraps, Pide, Quiches, our Shakes & Sundaes a must. We offer a specialised *on-and-off site* catering service for all size groups, clubs, events, functions, coaches and are Motorbike friendly. Our alfresco court-yard offers a space to enjoy between destinations and can be accessed via our convenient large rear-access car park and gateway to Cosmo Cafés air-conditioned dining. Cosmo Café is open for Breakfast, Lunch & Dinner, Monday to Saturday and **most Sundays** - early till late and located in the heart of Bombala. Dine in or take-away – BYO is most welcome and *corkage is free*.

“Our Greek Style – Family Owned Café” has been serving the
Monaro Region since 1963

COSMO CAFÉ PROUDLY SUPPORTING OUR COMMUNITY